

Bb

Lean On Me

Intro

5

The Intro section consists of two staves of music. The first staff (measures 1-4) and the second staff (measures 5-8) both begin with a treble clef, a key signature of two sharps (F# and C#), and a 4/4 time signature. The music is written in a single melodic line. It features a series of eighth and sixteenth notes, often beamed together, with many notes marked with an accent (^). The melody is characterized by a steady eighth-note pulse. The first staff ends with a repeat sign, and the second staff also ends with a repeat sign.

Verse

9

The Verse section consists of two staves of music, each containing four measures of whole rests. The first staff (measures 9-12) and the second staff (measures 13-16) both begin with a treble clef, a key signature of two sharps (F# and C#), and a 4/4 time signature. The music is written in a single melodic line. The first staff ends with a repeat sign, and the second staff also ends with a repeat sign.

Chorus

17

The Chorus section consists of two staves of music. The first staff (measures 17-20) and the second staff (measures 21-24) both begin with a treble clef, a key signature of two sharps (F# and C#), and a 4/4 time signature. The music is written in a single melodic line. It features a series of eighth and sixteenth notes, often beamed together, with many notes marked with an accent (^). The melody is characterized by a steady eighth-note pulse. The first staff ends with a repeat sign, and the second staff also ends with a repeat sign.

Verse 2

25

The Verse 2 section consists of two staves of music. The first staff (measures 25-28) and the second staff (measures 29-32) both begin with a treble clef, a key signature of two sharps (F# and C#), and a 4/4 time signature. The music is written in a single melodic line. It features a series of eighth and sixteenth notes, often beamed together, with many notes marked with an accent (^). The melody is characterized by a steady eighth-note pulse. The first staff ends with a repeat sign, and the second staff also ends with a repeat sign.

Bridge

Sing and clap

33

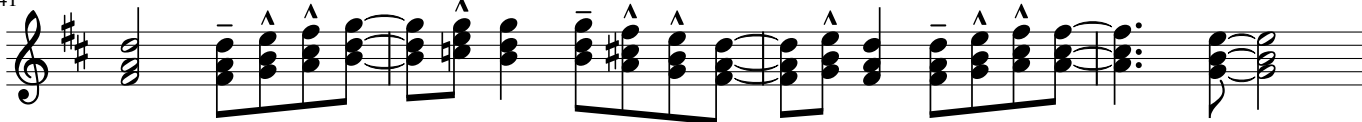


37

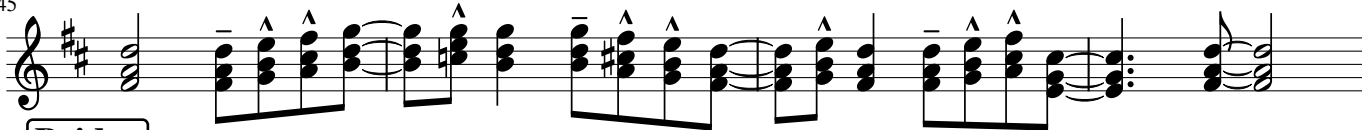


Chorus

41



45



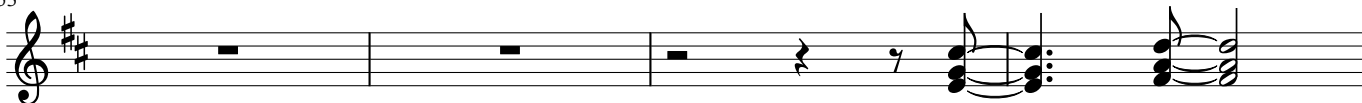
Bridge

Sing and clap

49

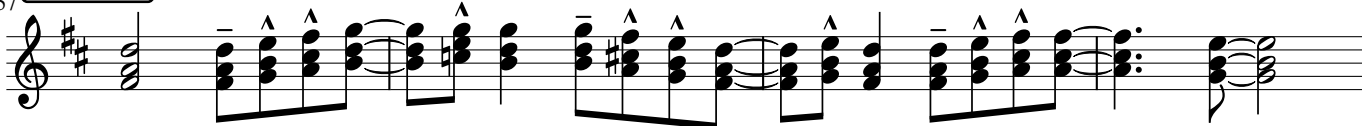


53

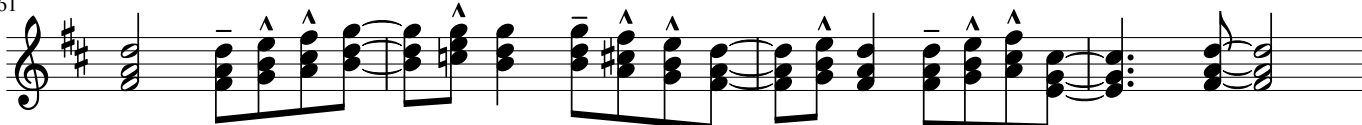


Verse 3

57



61



Loop

65

